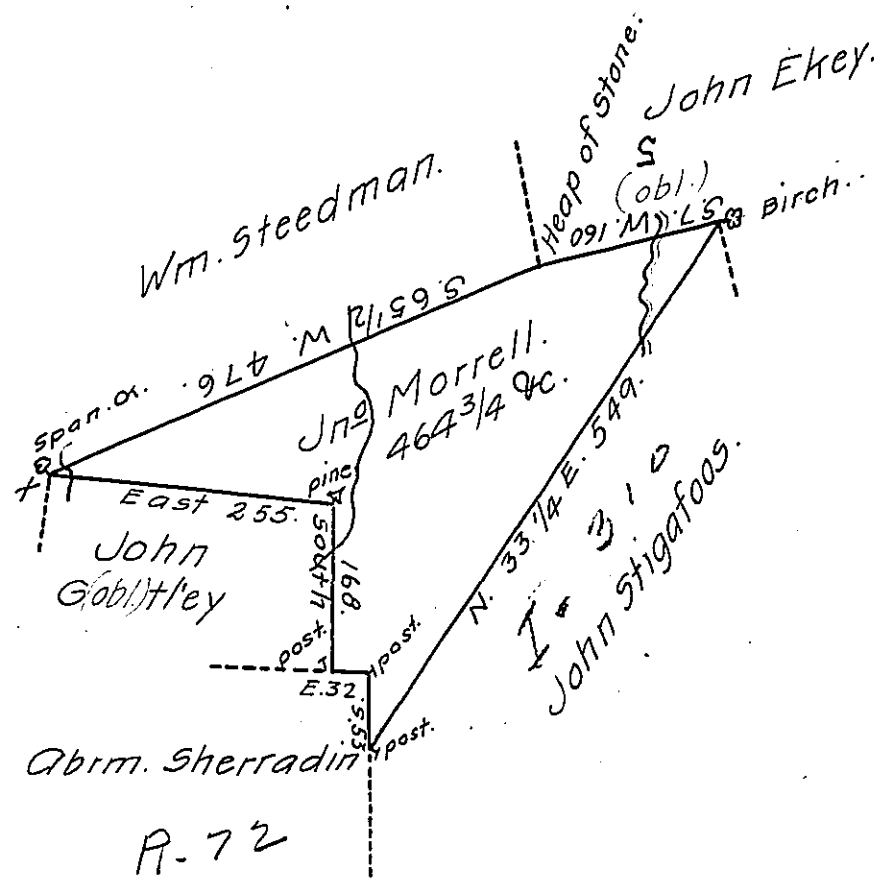


Butler
Luzerne,



Draft of a tract of Land Called _____ Situate on the waters of Nescopeck Creek in the County of Luzerne containing four hundred & sixty four acres $\frac{1}{4}$ & allowance, Surveyed for John Morrell the 24th day of May, 1793 by virtue of a warrant dated the 21st Day of April, 1793 To _____ by W^m. Gray, D.S.

Daniel Brodhead, Esqr., }
 Surv^r Gen^l. }

IN TESTIMONY that the above is a copy of the original remaining on file in the Department of Internal Affairs of Pennsylvania, made conformably to an Act of Assembly approved the 16th day of February, 1833, I have hereunto set my Hand and caused the Seal of said Department to be affixed at Harrisburg, this _____^{teenth} day of August, 1911.

Henry Howell,
 Secretary of Internal Affairs.